

# Luxface

collection



[www.premium-panels.com](http://www.premium-panels.com)

# PREMIUM PANELS

## Philosophy

In this modern world, people are becoming more conscientious about their environment and value the benefits of doing positive things for the future. This is reflected in what is expected of the spaces they are living in: an environment with 'touchable' materials, which inspire warmth & comfort, offer solutions to individual or group needs and take care about the environment and health.

At the same time, just because you want your space to be efficient, sustainable, healthy, and comfortable, does not mean that it cannot be innovative and beautiful.

It goes without saying; if you want to create a truly stylish atmosphere, putting the right decoration on your walls will make all the difference.

We found there is a need to find eco-conscious design-products to higher levels of quality, luxury, and sophistication: High class products with a message!

## Premium Panels, your choice

We, Premium Panels, have more than 20 years experience in interior projects & design and are constantly developing our portfolio with high class interior design products. Our products are all handmade and recognized as eco-friendly.

As projects today require both affordable products which are easy to use and products which can satisfy the individual, we have chosen to offer products which are a blend of both high class aesthetic and technical elements.

We believe that our collections of Stack Panel -, Stonini Profilestone -, and Luxface Ecoresin will enable an architect or interior designer to create a favorable technical solution and also reply to the individual wishes of the end customer.

## Premium Panels, our mission

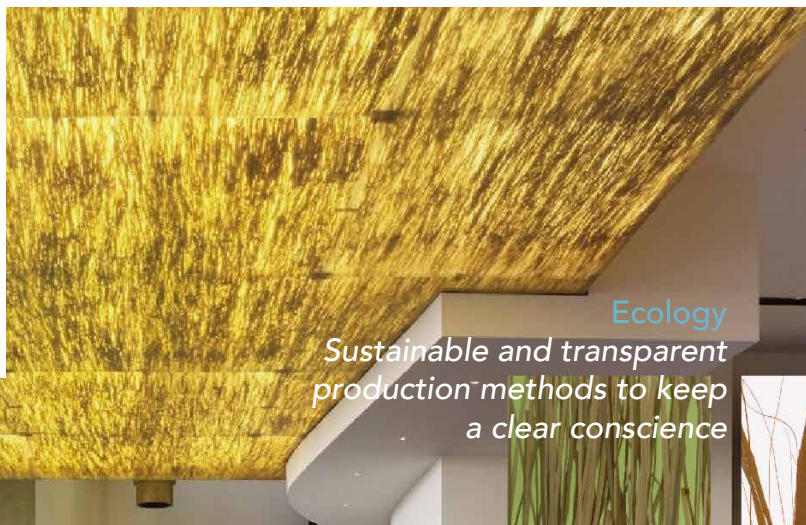
Delivering a project in these days is all about connecting companies, products, and people. We, Premium Panels, want to understand where, why, when, and by whom our products will be used. We are interested in the idea behind your project, this in order to assure that there will be a match with the idea behind the product.

Convince yourselves, and check our collections on our website: [www.premium-panels.com](http://www.premium-panels.com).

## Premium Panels, your service

Throughout Europe we work with a network of product specialists: Your Premium Panels commercial representative or agent. Please do not hesitate to get in touch with your personal contact through our headquarters, based in The Netherlands.

Your Premium Panels team.



Ecology

*Sustainable and transparent  
production methods to keep  
a clear conscience*

# LUXFACE

Unlimited transparency

The word 'transparency' holds multiple meaning. It refers to the transmission of light through an object and can also serve as a metaphor for visibility; making visible what is valued, what has happened and what is underway.

The use of transparency makes people 'want to get to the next space'. At the same time, transparency and opacity make the smaller spaces in which we live and work feel larger. Our Luxface-collection offers a great variety in design to satisfy human emotions by using transparency: creating transparency and human connection can be essential in your design project.

Our Luxface-collection is made of an ecoresin that allows an unlimited design into eye-catching installations. Through its aesthetic language scientific realities can be translated into engaging experimental spaces, that opens the potential to a broad public engagement, empathy and knowledge, specifically in ecological issues.

Premium Panels' Luxface-collection needs a creative mind, as design meets the new imagination. Try to combine with innovative lighting; Luxface brings a unique and colourful atmosphere to each of your projects. Try to value conscience and uniqueness! The light-weight panels enable qualifications of LEED-credits for building-sustainability; are produced on an individual basis, are hand-crafted and thermoformable.

We invite you to experience 'transparency' through our seductive Luxform, Luxtone, Luxice and Luxcore-collections.

Your visibility, your choice

## Economy

*We provide you with the most efficient and economic way to work with Premium-Panels' products*

## KEY FEATURES

- Light weight compared to glass
- Easy to use
- Ecoresin
- Unlimited design
- Design with light
- Unbreakable



# LUXFORM

Luxform is the interlayer-product of Luxface; in total 6 different types of interlayers are possible. Creating your design a-la-carte by integrating those elements which offer that uniqueness you are looking for.

## SPECIFICATIONS

General description	Luxform is an ecological PETG-resin panel with different interlayers possible
Sizes	2400x1200mm and 2900x1200mm
Thickness	3mm, 4mm, 6mm, 8mm, 10mm, 12mm, 19mm, 25mm
Types of interlayers	Color elements, embossed elements, graphic elements, metallic elements, natural elements, textile elements
Weight	On request, depending on the thickness chosen
Finishes	Gloss, matte, sandstone, satin
Edges	Standard – saw cut edge, sanded, flame, sealed, solvent polished
Safety	Class A fire rating, no toxic gasses will be produced by combustion

# LUXFORM COLOR COLLECTION

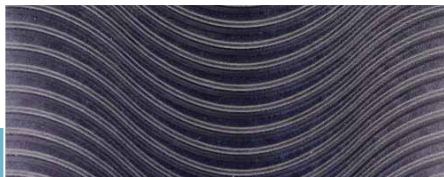
Luxform Color, pure color allows to intensify the translucent color and alter the light transmission.





## LUXFORM **EMBOSS** ELEMENTS COLLECTION

Luxform Embossed Elements, creating subtle movement in your design.



**WAVE BLACK**



**V MINI**



**MOSAIC LEMON**



**BUBBLE**



**BLADE COFFEE**

More patterns at [www.premium-panels.com](http://www.premium-panels.com).

## LUXFORM **GRAPHIC** ELEMENTS COLLECTION

Luxform Graphic Elements, creating high impact spaces, utilizing your own custom art work, photography, logo's and messaging.



**GRID WAVE CLEAR**



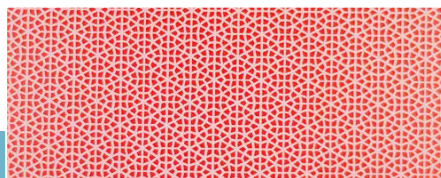
**CROSSLINES**



**RANLINES**



**LANDSCAPE**

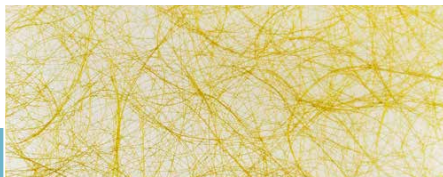


**HEXAGON**

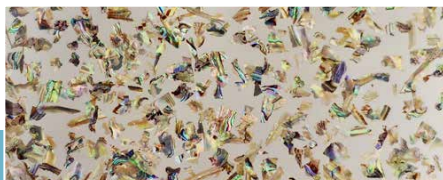
More patterns at [www.premium-panels.com](http://www.premium-panels.com).

## LUXFORM **METALLIC** ELEMENTS COLLECTION

Luxform Metallic Elements, creating your contemporary environment by using vibrant and colorful metallics.



**SPIN GOLDEN**



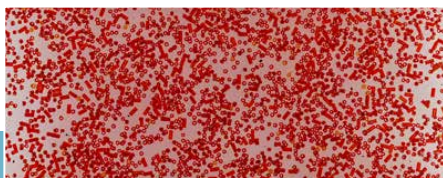
**OYSTER SHELL**



**COPPER LEAF**



**CAPIZ SHELL GREEN**



**GLASS PIPE**

## LUXFORM **NATURAL** ELEMENTS COLLECTION

Luxform Natural Elements, an organic touch to a space, the very best nature has to offer.



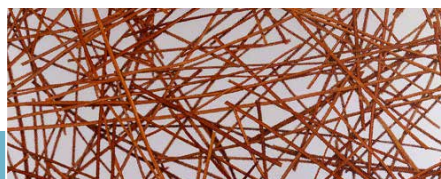
**BRACKEN**



**BOTANIC FLOWER CHRYSANTHEMUM**



**BOTANIC LEAF PINK**



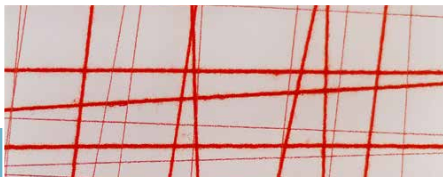
**COFFEE GRASS**



**GRASS WITH SEAWEED**

## LUXFORM TEXTILE ELEMENTS COLLECTION

Luxform Textile Elements, the softness of fabrics woven into our translucent resin-panels to evoke natural warmth of elegance.



SPIDER WEB RED



SPIDER SILK BLUE



RANDOM



STAR



DESERT PLUS



More patterns at [www.premium-panels.com](http://www.premium-panels.com).



# LUXTONE

Luxtone is a solid translucent surface, coloured through in a wide range of different luminous colors; it is durable, light-transmitting and has an anti-fingerprint coating.

## SPECIFICATIONS

General description	Luxtone selects a variety of clear acrylic polymer material based on stringent criteria, to which a matte finish and fingerprint-block-coating is applied. Luxtone is a bold, solid, translucent surface, saturated with luminous colors; durable and light-transmitting medium developed
Sizes	2400x1200mm
Thickness	12,5mm, 20mm, 25mm, 50mm
Types of interlayers	No interlayers
Weight	On request, depending on thickness
Finishes	Renewable
Edges	Standard – saw cut edge, sanded, flamed, sealed, solvent polished
Features and benefits	Durable, formable, renewable, stable, translucent

# LUXTONE COLLECTION

Creating your light transmitting system.





# LUXCORE

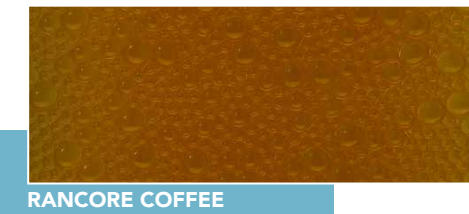
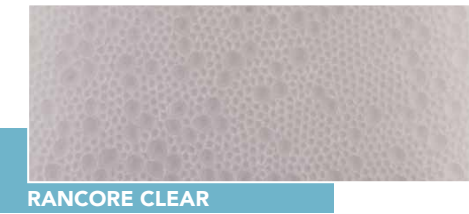
Luxcore, with the use of a honeycomb interlayer practical advantages, such as weightsaving, can be combined with aesthetic values in design such as colors and translucency.

## SPECIFICATIONS

General description	The innovative interlayer-core differs from the others in the range; it is extremely flexible in how it can be used and is easy to combine with individual items
Cladding composition	PETG
Core Composition	PMMA, PC, Aluminium
Sizes	2400x1200mm
Thickness	10mm, 19mm
Types of interlayers	Minicore, Unicore, Rancore and Hexcore
Weight	On request, depending on thickness
Finishes	Gloss and matte
Edges	Standard – saw cut edge, sanded, flamed, sealed and solvent polished
Features and benefits	Translucent, excellent light transmission, thermal insulation, light weight

# LUXCORE COLLECTION

Luxcore, combining translucency and honeycomb.



# LUXICE

Luxice, a 100% ecoresin tile made of hundreds of fibre-optic light guides. The interesting aspect of Luxice is the possibility to interact with different types of light. The panel with fibre-optic element shimmer and sparkle in response to moving lights and shadows.

## SPECIFICATIONS

General description	Luxice is a 100% ecoresin panel made of hundreds of fibre-optic light guides which are carved into a transparant block of acrylic polymer. Luxice also picks up and disperses nearby colours
Cladding composition	Acrylic glass
Core Composition	PMMA
Sizes	2400 x 1200mm
Thickness	20mm, 25 mm
Types of interlayers	ICE XI, ICE VI, ICE C
Weight	On request, depending on thickness
Finishes	Gloss, matte
Edges	Standard – saw cut edge, sanded, flamed, solvent polished

# LUXICE COLLECTION

Luxice, moving light to the next dimension.



LUXICE C



LUXICE VI



LUXICE XI

## APPLICATIONS AND SPECIFIC INSTALLATIONS

Our Luxface products find their numerous applications in partition-walls, space-dividers, bars, table-tops, furniture and ceilings. Numerous high class-hotel chains, jewelry shops, perfume-stores, shopping malls, restaurants have chosen the wide variety of the Luxface-portfolio.



### General recommendations

#### Fixing

Depending on the application our Luxface-products are easy to install. For each kind of application either profiling systems or mechanical installation instructions are available. Should you require more detailed information, please contact your Premium Panels specialist.

#### Cutting

If possible, leave the original masking on the sheet during cutting operations. Use sharp and clean blades and hold the sheet securely in place. Bring the blade to full speed before starting the cut and use compressed air to cool the blade and remove the chips. Wear proper safety equipment including safety glasses and gloves. Most saws and routers commonly used for wood or metal should satisfactorily cut sheets of Luxface.

#### Drilling

Luxface can be readily drilled using a standard drill press or handheld drill with sharp, clean drill bits. We advise to use drills designed for drilling plastic or polycarbonate. As with any plastic sheet product, it is important to keep vibration to a minimum to prevent chipping or cracking.

#### Storage

Luxface panels are flexible and when stacked on each other for a period of time bowing may occur. Turn the panels upside down overnight or longer if necessary to flatten; this will make the panel return to its original shape.

#### Note:

*Luxface panels are a handmade custom product. Variations and slight imperfections are a part inherent nature of the product and may occur slightly in thickness and/or size. Large panels have some degree of flexibility.*

## OTHER PREMIUM PANELS PRODUCTS:

### **STACK PANEL**

collection



### **STONINI**

collection







**LUXFACE®**  
LUXURY SURFACE DESIGN

**STONINI™**  
profilestone panels

 **STACKPANEL™**  
TIMBER FEATURE MODULE PATENT PENDING

**cd** design  
composite

**For further information, please contact:**

**PREMIUM  
PANELS**

Neerloopweg 41  
4814 RS Breda  
The Netherlands  
T +31 (0)76 762 0535  
[info@premium-panels.com](mailto:info@premium-panels.com)

[www.premium-panels.com](http://www.premium-panels.com)